

data.Brno

Brno data, all in one place



Barbora Šípková

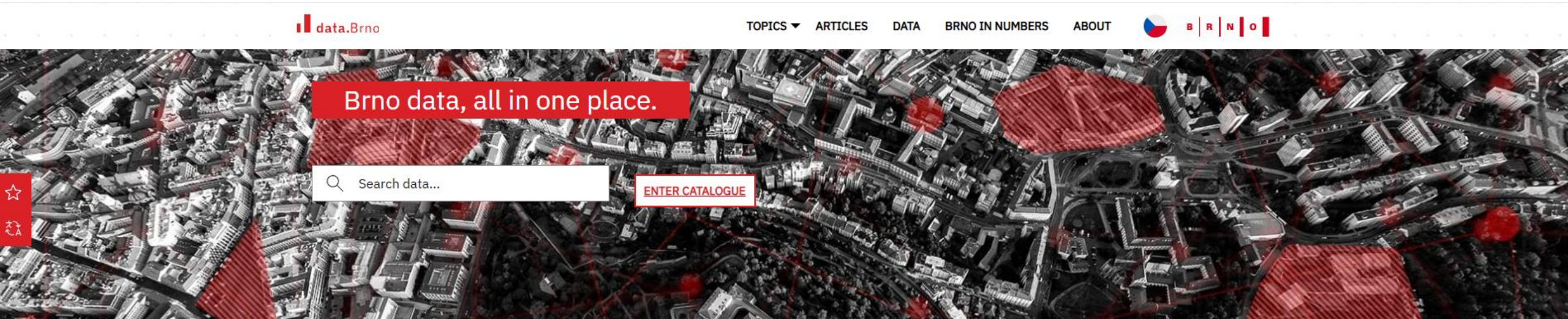
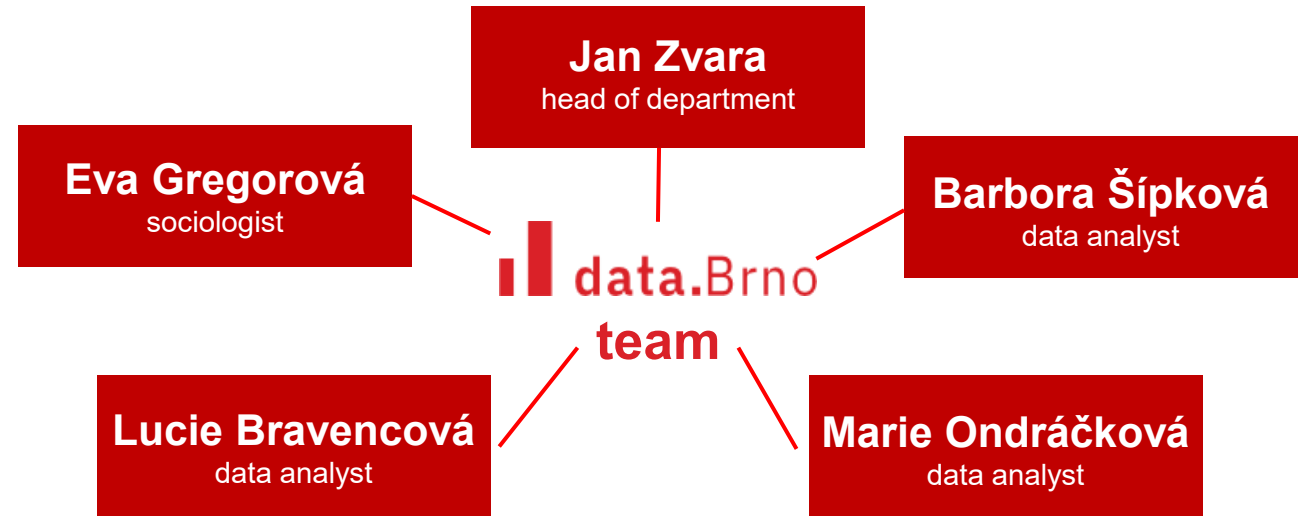
Brno City Municipality

Data, Analysis and Evaluation Department



about data.Brno

- since 2018
- targeting three types of users
 - general public
 - experts or students
 - developers and IT professionals
- english version
 - in process
 - all datasets



tools and softwares

FRONT-END

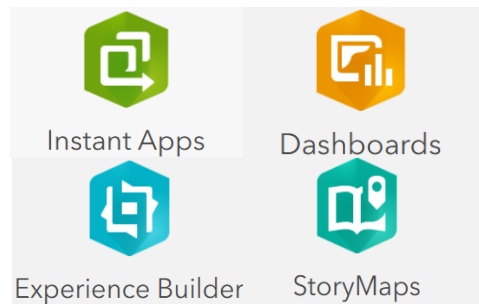


ArcGIS Hub

DATA STORAGE & geographic data presentation



ArcGIS Online:



DATA ANALYSIS



Power BI



Python (in ArcGIS Notebooks)



VISUALIZATION



ChatGPT



What kind of data do we use?

- city institutions and public services
- national statistics
- public surveys
- mobile operators (geolocation), economic indicators (gastronomy and retail), traffic detectors



topics



- **people and housing**

- demographics
- behavior
- housing
- health



- **transport**

- motoring
- cycling
- public transport
- pedestrians
- accidents



- **city economy and businesses**

- labour market
- city budget
- business
- non-profit institution



- **science and education**

- science
- education



- **environment and nature**

- sustainability
- environment
- nature



- **leisure time**

- culture
- sports
- history
- infrastructure for children
- tourism



- **public services**

- emergency services
- municipal services
- accessibility
- waste management
- other services



- **infrastructure and city development**

- technical infrastructure
- property
- development in general



Brno in numbers

- every year brings an overview of basic information about Brno
- year 2025 in preparation
- **two outdoor exhibitions**
 - June – Mendel Square
 - September – Moravian Square
- **available at:**
<https://datahub.brno.cz/pages/bin>

residents
402,739 ↑

foreigners
66,582 ↑

unemployment rate
5.2 % ↑

∅ salary
CZK 56,626 ↑
€ 2,269.8

university students
67,901 ↑

2024 BRNO IN NUMBERS



1 sq meter flat price
CZK 119K ↑
€ 4,786

municipal waste
109,003 t ↓

∅ temperature
12.2 °C ↑

total precipitation
618 mm ↑

water consumption
100 l/per./day ↑
Brno + Modřice

BRNO CITY MUNICIPALITY BUDGET

revenues	expenses
CZK 22.4B ↑ € 897.9M	CZK 21.3B ↑ € 865.8M



Životní prostředí

Environment

data.brno.cz



Koncentrace chlorofylu v Brněnské přehradě

Chlorophyll concentration in the Brno Reservoir

Měsíční průměr
Monthly average
↑ 20,3 µg/l

Měsíční maximum
Monthly maximum
↓ 38 µg/l

Veřejné výdaje na ochranu ŽP

Public expenditure on environmental protection

↑ 1.2 billion CZK

↑ 1,2 mld. Kč

Vysazené a vykácené stromy

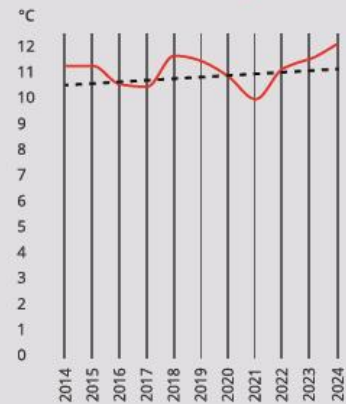
Planted and cut down trees



Průměrná roční teplota

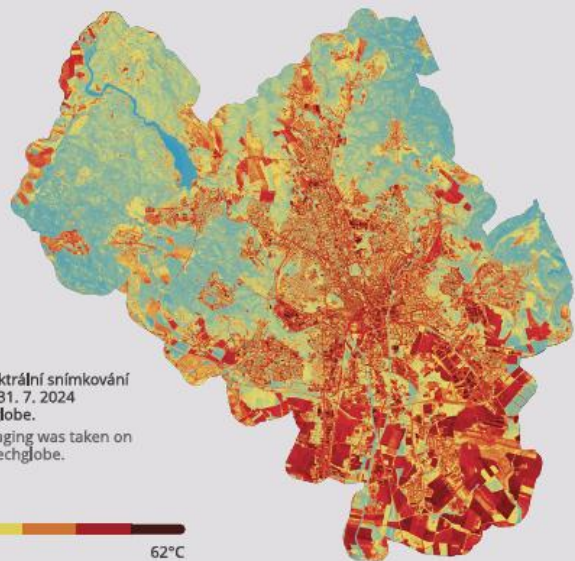
Average annual temperature

↑ 12,2 °C



Teplotní mapa*

Thermal map*



*Letecké hyperspektrální snímkování bylo pořízeno dne 31. 7. 2024 společností Czechglobe.

*Hyperspectral imaging was taken on July 31, 2024 by Czechglobe.



Bydlení

Housing

*data k prosinci 2024

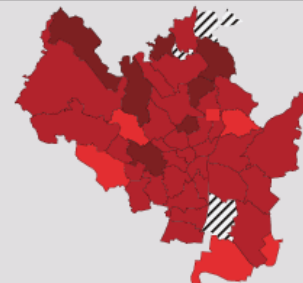
data.brno.cz



Nabídková cena prodeje bytů (Kč/m²)*

Offer price for sale of flats (CZK/m²)*

Bez nabídek
Without offers



Průměrná cena bytu*

Average price of flat*

↑ 7 874 197 Kč

Meziroční nárůst cen

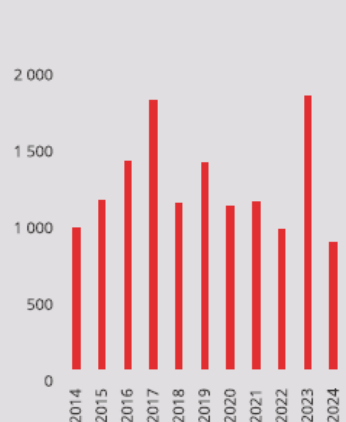
Year-on-year price increase

↓ 10,2 %

Dokončené byty

Completed flats

↓ 895



Nabídkové ceny bytů a počet nabídek

Offer prices of flats and number of offers

↑ 119 408

Nabídková cena Kč/m²
Offer price CZK/m²

↓ 1 091

Počet nabídek
Number of offers





What can you find on data.Brno?

- open data catalog
- interactive maps
- dashboards
- articles
- external collaboration



open data

- open data catalog on data.Bрно
- names, descriptions and documentation
- **long-term or static data**
 - showing development of trends or static data without many changes
- **real-time data**
 - data obtained dynamically at various intervals (from minutes to days)



open data:

<https://data.brno.cz/search?collection=dataset>

The screenshot shows the data.Bрно website interface. At the top, there are navigation links for 'TÉMATÁ', 'FORMÁT PŘÍSPĚVKŮ', 'DATASETY', 'BRNO V ČÍSLECH', '#HACKUJBRNO', and 'O WEBU'. A search bar contains the text 'Vyhledávání'. Below the search bar, there are filters for 'Sbírký' (Veškerý obsah, Datové sady, Stránky webu, Interaktivní mapy & aplikace) and 'Umístění'. The main content area displays two data sets. The first is 'Datová sada' titled 'Turistické okruhy / Popular tourist routes', with a description: 'Oddělení dat, analýz a evaluací, Magistrát města Brna. Bodová vrstva zástavek turistických okruhů z oficiálního průvodce Brnem www.gotobrno.cz.' It is a 'Feature Service' updated on '28. 4. 2026'. The second data set is 'Datová sada' titled 'Projekty participativního rozpočtu / Participatory budget projects', also from the 'Magistrát města Brna'. Below the data sets, there is a map search interface with 'Najít adresu nebo místo' and 'Výsledky: 196'. A large black redaction box covers the map area. To the right of the redaction, the title 'Průměrné aktuální teploty vzduchu / Average air temperatures' is displayed in large black text. Below the title, it says 'Statutární město Brno - Magistrát města Brna - Otevřená data' and 'Statutární město Brno'. There are three buttons: 'PROHLÍŽET MAPU', 'STÁHNOUT', and 'VÍCE -'. At the bottom, there are sections for 'Shrnutí' (Summary) and 'Podrobnosti' (Details).

Shrnutí

Průměrné teploty vzduchu naměřené na zdrojích Tepláren Brno, a.s.

English description below. Bodová vrstva průměrných teplot vzduchu naměřených na zdrojích Tepláren Brno, a.s. Bodová vrstva je výsledkem prostorové agregace hodnot z výměnníkových stanic, kde jsou jednotlivé teplotní senzory. Bod reprezentuje centroid dané oblasti a ne měřicí stanici. Data jsou aktualizována každých 15 minut. Zdroj dat: <https://www.teplarny.cz/cs/mapa-teplot>. Souřadnicový systém - GCS WGS84. Kontakt: data@brno.cz

The point layer of average air temperatures measured at the sources of Teplárny Brno, a.s. The point layer is the result of spatial aggregation of values from the heat exchange stations where the individual temperature sensors are located. The point represents the center point of the area and not the station. The data is updated every 15 minutes. Data sources: <https://www.teplarny.cz/en/map-teplot>. Coordinate system - GCS WGS84. Point of contact: data@brno.cz

Podrobnosti

- Datová sada**
Feature Layer
- 3. listopadu 2025 v 13:45:31 SEČ**
Informace aktualizovány
- 26. června 2025 v 1:15:34 SELČ**
Data aktualizována
- 28. února 2025 v 12:21:47 SEČ**
Datum vydání
- Záznamy: 12**
[Zobrazit tabulku dat](#)
- Veřejné**
Každý uvidí tento obsah
- Licence CC BY 4.0**

interactive maps

- interactive maps
- storymaps
- 3D models

POPULATION.AND.HOUSING

.TRANSPORT.

CITY.ECONOMY.AND.BUSINESSES

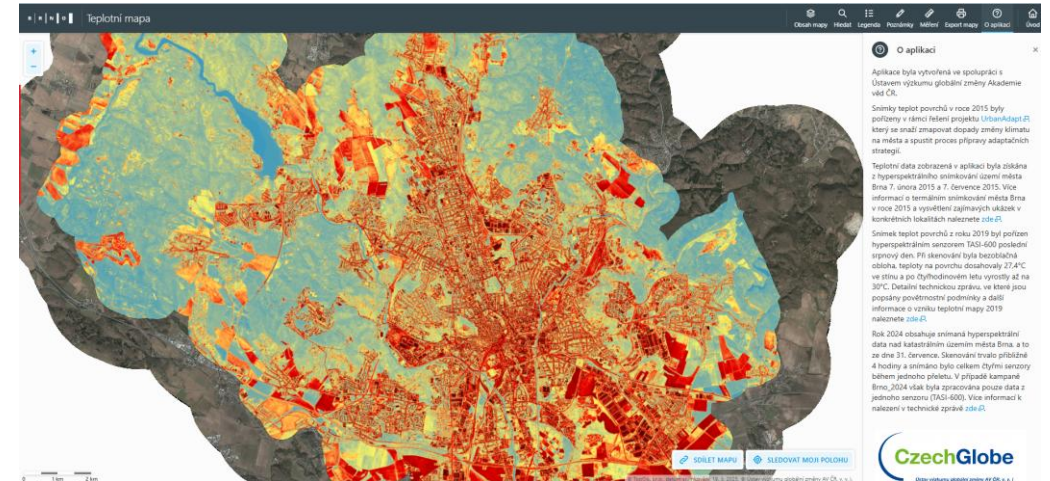
SCIENCE.AND.EDUCATION

ENVIRONMENT.AND.NATURE

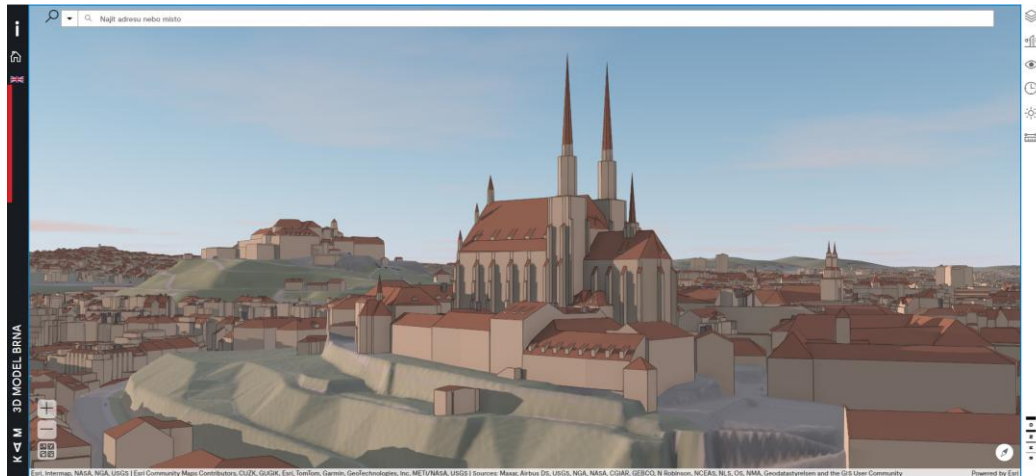
LEISURE

PUBLIC.SERVICES

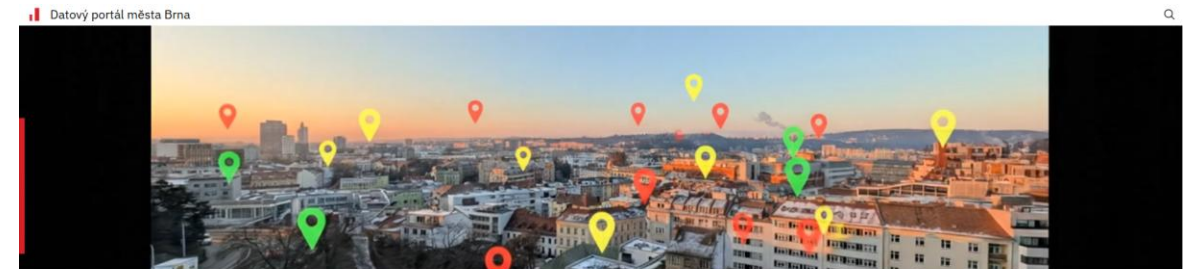
INFRASTRUCTURE.AND.CITY.DEVELOPMENT.



Thermal map



Brno in 3D



Pocitová mapa Brna 2025

Jak vidíme Brno?

Magistrát města Brna - Odbor participace

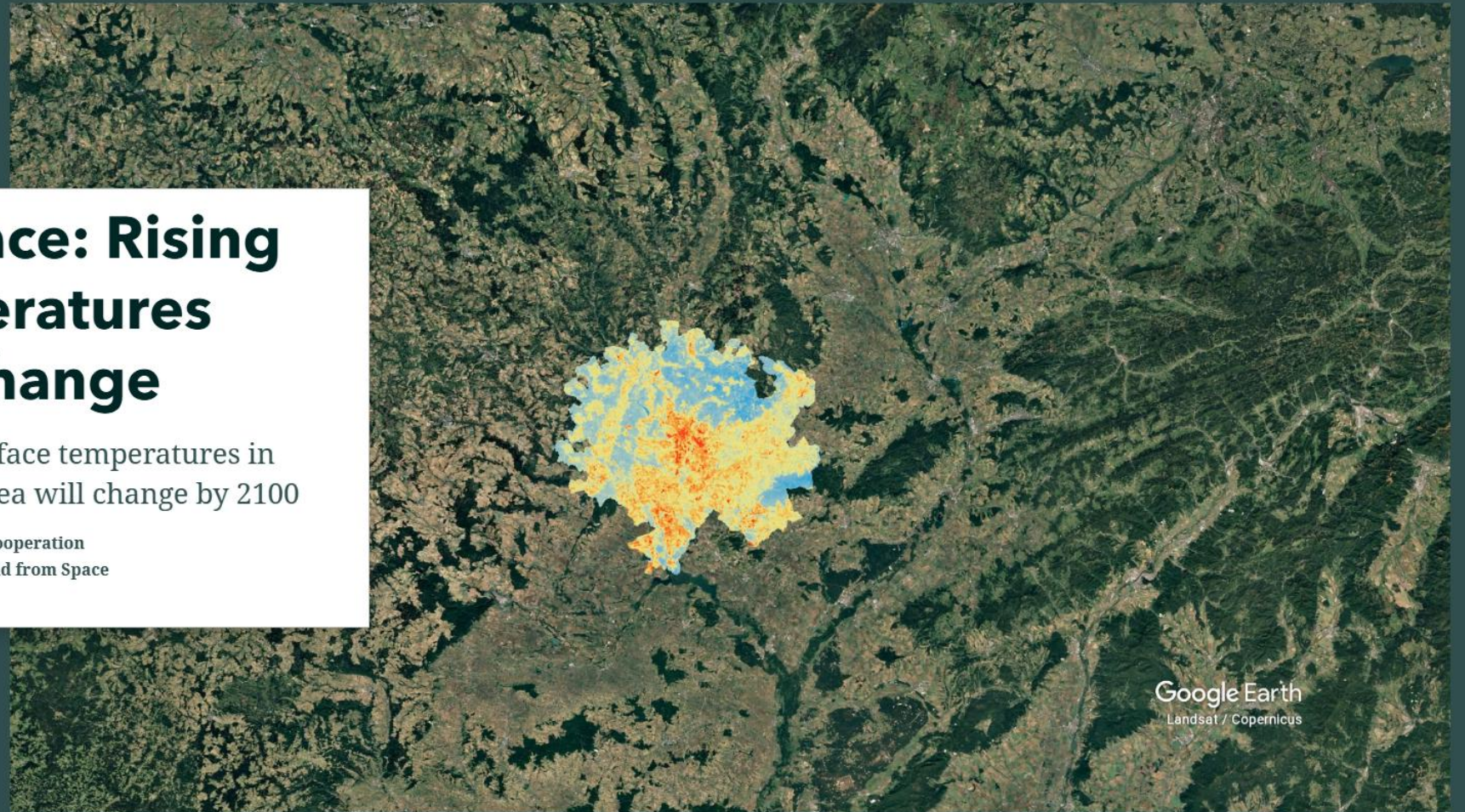
Úvod Vztah k Brnu Kde to prokoukno? Kde to potřebuje změnu? Kde trávit volný čas? Kam s návštěvami odjdu? Kde to vnímáme jako nebezpečné... Kde se má Brno rozvíjet? Změny hodnocení v čase? Sou

Emotional map of Brno

Brno from space: Rising surface temperatures and climate change

Satellite view shows how surface temperatures in Brno and the surrounding area will change by 2100

Data, Analysis and Evaluation Department in cooperation with the ITI Management Department and World from Space
April 13, 2026



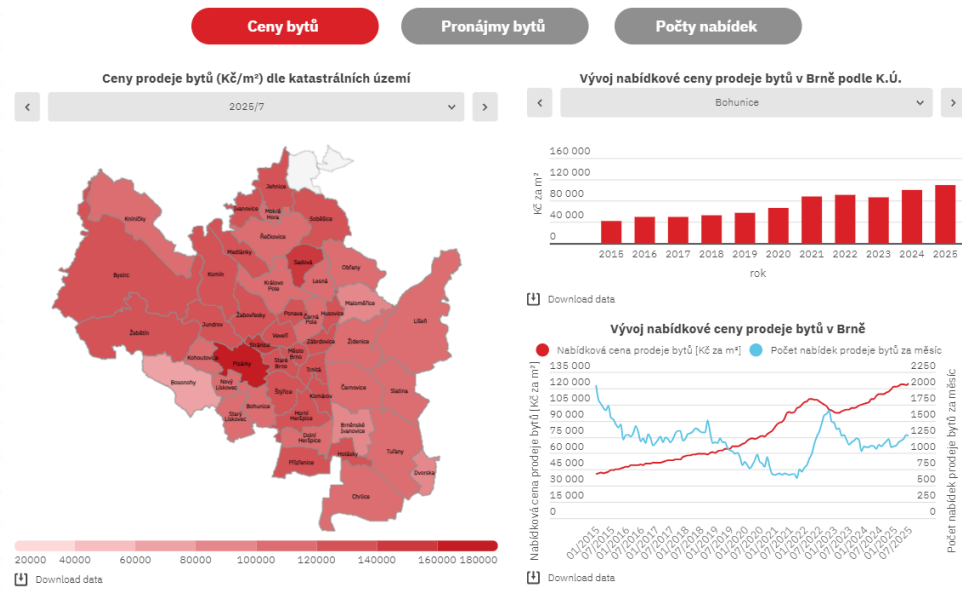
Google Earth
Landsat / Copernicus



dashboards

- for a quick overview off a topic
- some are updated regularly

Vývoj nabídkové ceny prodeje a pronájmu bytů v Brně



Development of the offer price for the sale and rental of apartments in Brno

POPULATION.AND.HOUSING

TRANSPORT

CITY.ECONOMY.AND.BUSINESSES

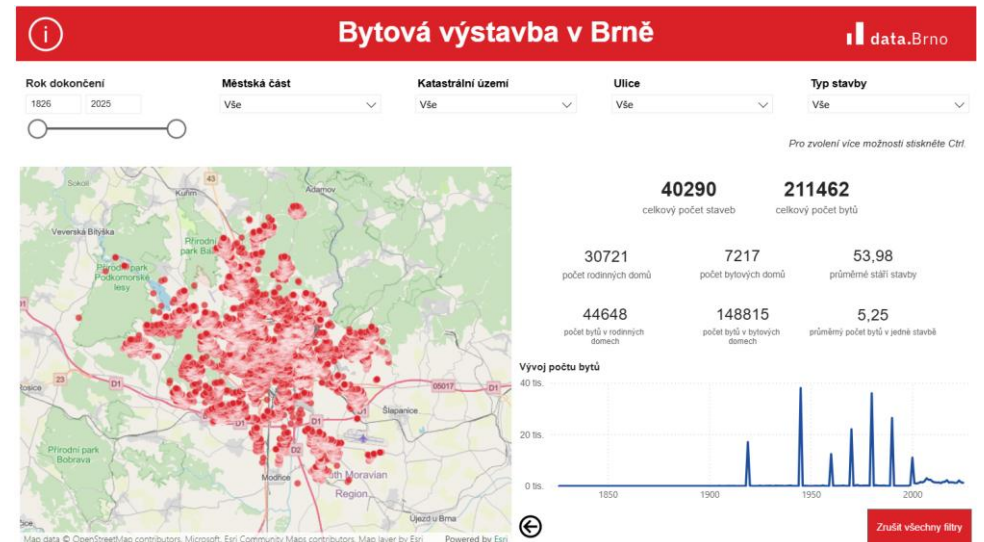
SCIENCE.AND.EDUCATION

ENVIRONMENT.AND.NATURE

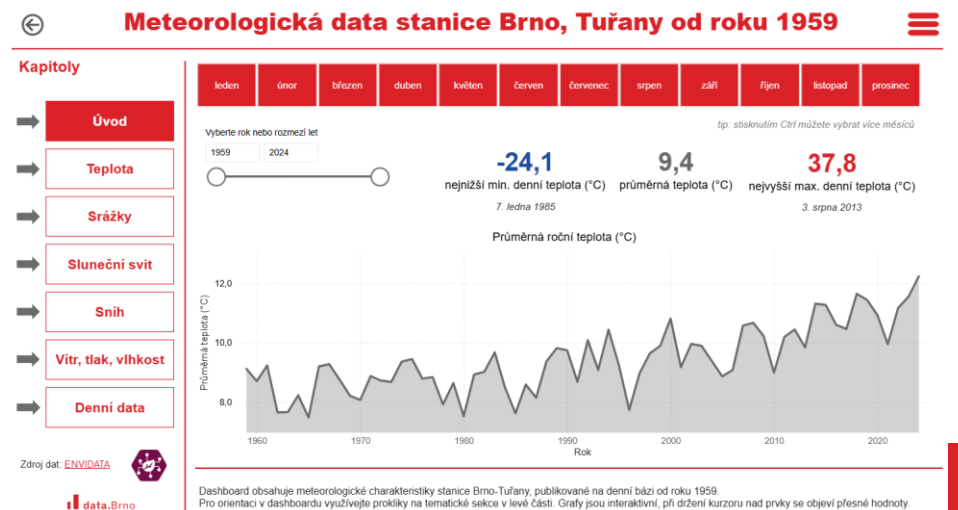
LEISURE

PUBLIC.SERVICES

INFRASTRUCTURE.AND.CITY.DEVELOPMENT



Housing construction in Brno Visualization of meteorological data



Dashboard obsahuje meteorologické charakteristiky stanice Brno-Tuřany, publikované na denní bázi od roku 1959. Pro orientaci v dashboardu využívají prokliky na tematické sekce v levé části. Grafy jsou interaktivní, při držení kurzoru nad prvky se objeví přesné hodnoty.

traffic counters and sensor measurements

Brno traffic sensors

Department of Transport, Department of Participation, Technical Networks Brno as



Ekosystém Smart City projektů s využitím 5G technologií

Welcome to the page that provides an overview of data from traffic counters located around Brno. Thanks to this data, we can better understand how people use the city, where walking and cycling are most intense, and how these patterns change over time. Such data helps the city plan new infrastructure, improve safety, and promote sustainable transport.

Note: The site is still in the development and testing period, integration of other counters is underway.

[HOW.SENSORS.WORK](#)

[DASHBOARD.WITH.CURRENT.DATA](#)

[SENSOR.PLACEMENT.AND.DESCRPTION](#)

[DATA.DOWNLOAD](#)

[ARTICLES](#)

articles

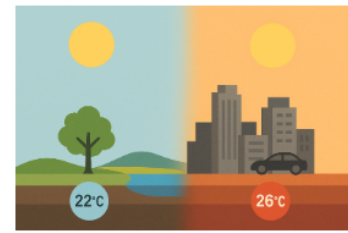
- on current topics
- discussing dashboards, data...
- summary of a broader topic

Urban Heat Island effect



From hot streets to milder winters: Brno's heat island

Barbora Šípková | 11.09.2025



The center of Brno is hotter in summer and warmer in winter than in the countryside. The city functions as a so-called heat island – buildings, asphalt and building heating accumulate heat, while cooling greenery and water are often lacking in cities. We looked at how the differences between urban and rural climate stations manifest themselves in summer and winter, what heat means for residents and what measures Brno and other Czech cities are implementing to cool down urban areas. **The Brno station, Žabovřesky**, which characterizes the urban station, and **Troubsko**, which characterizes the rural station, were chosen for comparison. The data is based on the website of the [Czech Hydrometeorological Institute](#).

What does urban heat island mean?

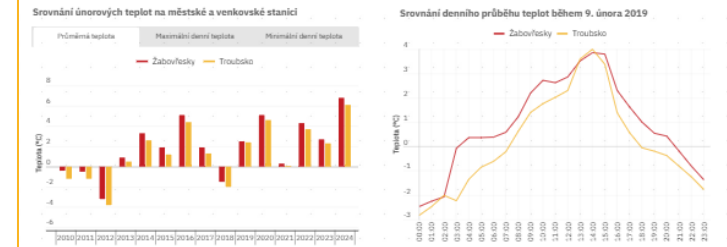
The city acts as a heat accumulator – man-made materials heat up more and cool down more slowly than the surrounding nature. As a result, the city has its own microclimate. This phenomenon is called the **urban heat island**, when urban areas are warmer than their rural surroundings. There are several reasons for this: surfaces such as asphalt and concrete absorb and store more solar energy than greenery or water, tall buildings slow down air flow and prevent heat from escaping, and heat produced by human activities – from transport, industry or heating – also contributes to the overall warming.

The difference between the city and the countryside can normally be 2 to 5 °C. However, it is important to distinguish between **surface temperature** and **air temperature**. Surface temperature (measured, for example, by satellites) shows how hot roofs or roads are - the differences here can be more than 20 °C between asphalt and greenery. The air temperature that we measure at meteorological and climatological stations varies less - usually by units of degrees. Nevertheless, it determines how people in the city feel and what health impacts overheating has.

Differences in winter temperatures

In winter, the heat island manifests itself a little differently than in summer. While the countryside cools down quickly during clear nights, the temperature in the city remains higher. The main cause is waste heat from buildings that escapes during **indoor heating**, partly due to insufficient insulation. As a result, even during February nights, the city center can be 2-3 °C warmer than the surrounding rural stations. This difference is most pronounced during inversion situations or when there is no wind, when cold air is held in the countryside, while the city remains relatively warmer.

The development of **average temperatures in February** between 2010 and 2024 shows that temperatures from the urban station generally remain higher than those from the rural station, by a few tenths of a °C. The difference is less noticeable for maximum and minimum temperatures. **The daily temperature trend** is a bit more interesting – the already mentioned effect of higher temperatures in the urban environment is evident here, when the air temperature at 3 am differed by **2.15 °C**.



Economic statistics of Brno retail and gastronomy

Barbora Šípková | 19.11.2025

Throughout the year, we monitor economic indicators and price levels in Brno's gastronomy in cooperation with the company [data.BRNO](#). Thanks to this data, a practical tool is available for analyzing the current situation in this economic sector. At a time when inflation fluctuates significantly and prices change literally from month to month, this system represents a way to quickly and reliably obtain an overview of trends in restaurants, cafes and bars. The data thus allows us to better evaluate the impacts of economic changes not only on entrepreneurs, but also on the city's residents.

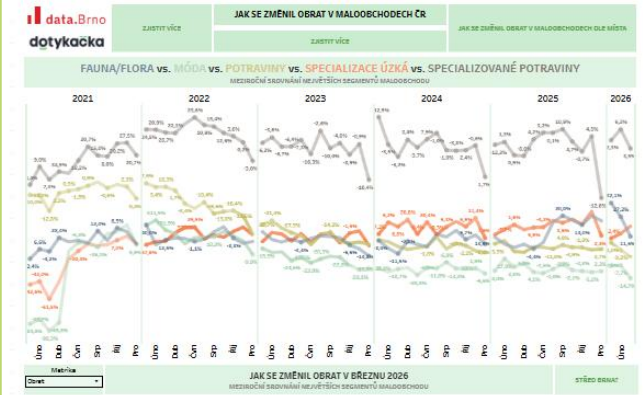
High-quality economic statistics are extremely valuable for cities and municipalities. Unfortunately, however, very little similar data is available in the Czech Republic. Another great loss was that in the past the potential of data from electronic sales records, which could have provided a much broader view of the development of the local economy, was not fully exploited.



What is the economic situation in the Brno retail sector?

Brno's retail sector in October showed significant differences between individual segments. **The food sector** stands out the most, with a year-on-year increase of **194%**. Such a significant increase is unprecedented in the country - even in the entire South Moravian Region, there was "only" a 38% growth, while Prague showed a decrease of 28%. On the other hand, Brno did not fare so well in other areas. The fashion segment recorded a decrease in turnover of 21% and stores with fauna and flora fell by 15%. The negative development also continues in specialized stores with a narrow assortment (-24%) and specialized organic or delicatessen foods (-10%).

From a regional perspective, it can be seen that while **Prague** benefits from growing demand in specific segments, especially fauna/flora (+44%) and narrowly specialized stores (+17%), **Brno** is mainly driven by the general food industry.



Visitor numbers at the Brno Dam

Daniel Marek, Lucie Bravencová, Eva Gregorová | 23.02.2026

The Brno Dam is one of the city's key public spaces. People come here to enjoy nature, sports, take a walk, and meet friends. In summer, it serves as an escape from the heat; in winter, when it freezes, it turns into an unexpected attraction. For many residents, the dam is a regular part of everyday life, for others, a favorite excursion destination or a symbol of urban recreation.

The Brno Dam area is very large and freely accessible, so it has not yet been possible to monitor numbers and trends in its visitor numbers. The only exception is **boat traffic on the dam**, where we know from ticket sales that the number of people transported reaches **almost 300 thousand** in the navigation season. However, with the development of modern technologies, the situation in the area of visitor measurement is changing.

In this article, we therefore look at the dam through the lens of available data. Currently, these are **data on the number of people present from the mobile operator O2**, which we know through the [Intiq application](#), and data on passages from an automatic **traffic intensity counting sensor** near the dock. The article is supplemented with current data from [a sentiment map](#), which shows how people evaluate the dam space and how they use it.

The data collection methodology is always at the beginning of the description of the results of individual measurements.



What was last summer like at the dam from the perspective of mobile data?

Methodologically, it is necessary to recall the issue of mobile data that this is data that is modeled and extrapolated to the level of the entire population (a mobile operator always serves only a certain percentage of the population) and the use of this data has many methodological limitations ([more in this article](#)). Nevertheless, this data is suitable for measuring locations, such as the Brno Dam, and in addition, it adds a unique perspective on the temporal rhythm of visitor numbers in the area.

For each day from June to the end of August 2025, thanks to mobile data, we know approximately how many people spent time here. **The most important influence on the number of visitors is whether it is a weekday or a weekend.** In addition to this connection, it is possible to compare the data with air temperature and precipitation totals and see what influence the **weather**, among other causes, could have had on the number of visitors.



Visitor analysis using mobile data



Economic statistics

external collaboration

- Hackatons and student projects
- internship opportunities
- cooperation with Department of Transport and Czechitas



#hackbrno

a virtual exhibition space where innovative projects and applications are presented, demonstrating the creative use of open data from Brno

[HACKATHONY](#)

[STUDENT_PROJECTS](#)

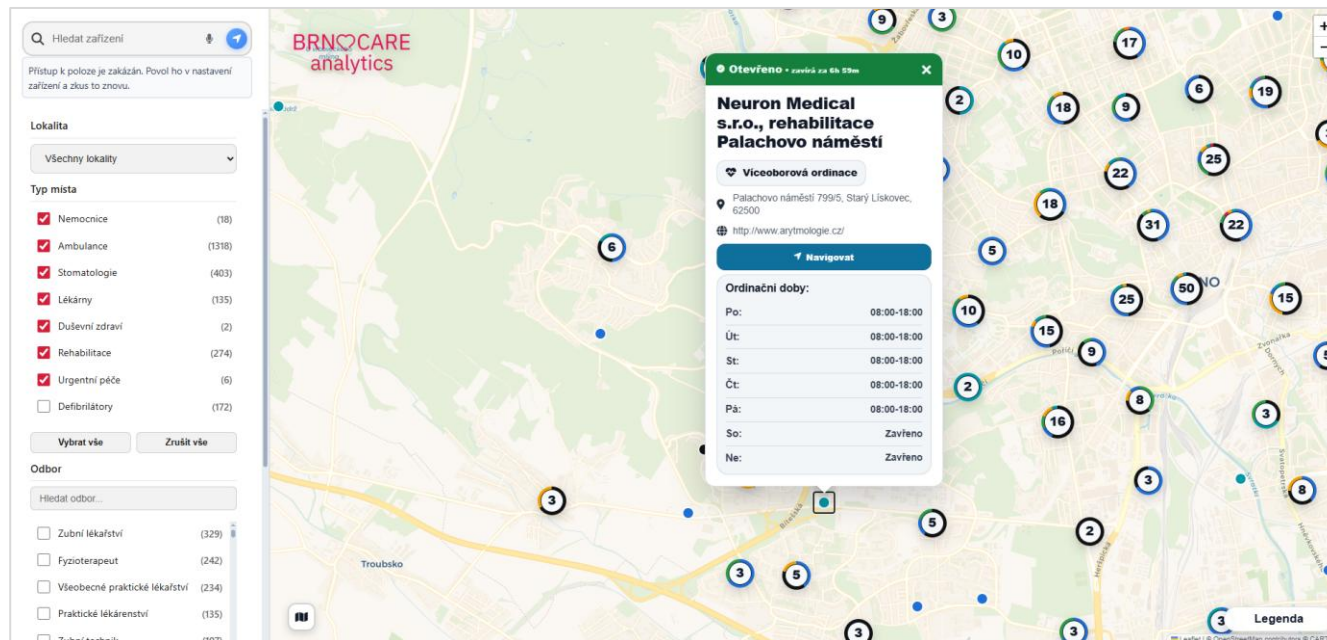
[CZECHITAS.DIGITAL.ACADEMY.](#)

[COOPERATION](#)

[OPEN.DATA](#)

technical student competition BSEC


- annual
- 2026 – app for finding healthcare facilities in Brno



most viewed dataset



floodplain Q100

 **Statutory City of Brno - Brno City Hall - Open data**
Statutory city of Brno

[VIEW MAP](#) [DOWNLOAD](#) [MORE ▾](#)

685 000 views
in 2024

Summary

Floodplain including smaller tributaries during a 100-year flood event.

The dataset contains data on floodplains including smaller tributaries at flood levels Q5, Q20, Q100 and the definition of the active zone of the floodplain of the city of Brno.


According to the Act on Waters (Water Act) No. 254/2001 Coll. Section 66, paragraph 1, floodplains are administratively designated areas that may be flooded with water in the event of a natural flood. The extent of the floodplain is determined by the water authority based on hydrotechnical calculations of the administrator of the affected watercourse. In built-up areas, buildable areas and other areas, the water authority, at the proposal of the watercourse administrator, defines the active zone of the floodplain according to the danger of flood flows. Floodplains and their active zones are

[READ MORE ▾](#)


[Health and Environment](#)

Details


 **Data set**
Feature Layer

 **May 12, 2021 at 0:00:00 CEST**
Information updated

 **Irregularly**
Data updated: April 27, 2026 at 15:31:11 CEST

 **April 26, 2021 at 3:30:58 PM CEST**
Release date

 **Entries: 11**
[Show data table](#)

 **Public**
Everyone will see this content

 **CC BY 4.0 license**
[View license details](#)

10 451 views in 2025





B | R | N | O

Thank you for your attention.

data@brno.cz

[X @dataBrno](#)

Mgr. Barbora Šípková

data analyst

sipkova.barbora@brno.cz

+420 542 175 261